

147

WARIANTY

na ob. solo

1971

VARIANTS for oboe solo

WARIANTY na obój solo

increase the tempo as much as possible,
but still maintain a clean legato!

BOGUSŁAW SCHAEFFER

f

$\text{♩} = 48 \rightarrow 56$
calmo *accel.* - - - -

mp → *(mp)*

$\text{♩} = 66$
(vibr.)

ppp! **fff** *mp* short

* try to get this high pitch!

mf **ppp**

mf **very fast**

2" 6"-7"

Musical staff with notes, slurs, and dynamic markings. Includes a trill marked "trill" and a triplet marked "3".

moltol *p, ma con mass. espressione* →

falsol 3

3"

Musical staff with notes, slurs, and dynamic markings. Includes a triplet marked "3" and a note marked "E₄".

sub. *ppp* →

(-sempre *ppp* possib.-)

Musical staff with notes, slurs, and dynamic markings. Includes a trill marked "(mp) trull." and a note marked "E₄".

sfff → *mf* →

* try to get this high pitch!

max. (1")

Musical staff with notes and dynamic markings. Includes accents (^) and dynamic markings *mf* and *f*.

inequal rhythmical values

mf / *f* →

Musical staff with notes and dynamic markings. Includes accents (^) and dynamic markings *mf* and *f*.

(cont.)

Musical staff with notes, slurs, and dynamic markings. Includes a triplet marked "3" and a quarter note marked "1/4".

♩ = 72 → 64

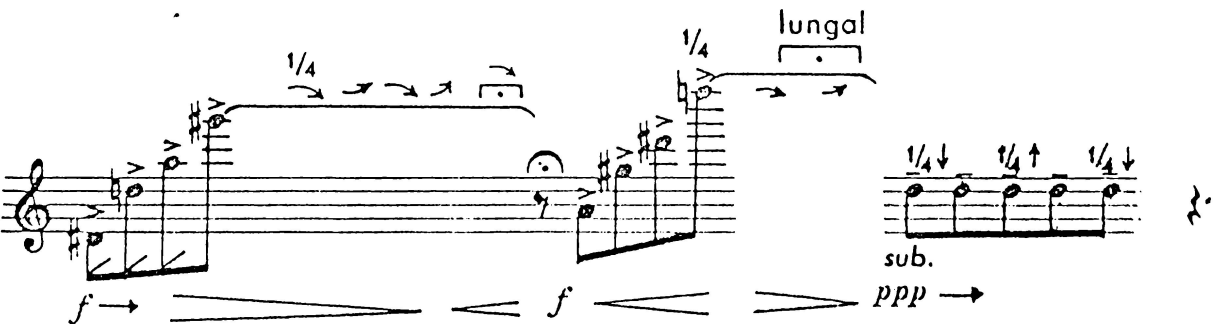
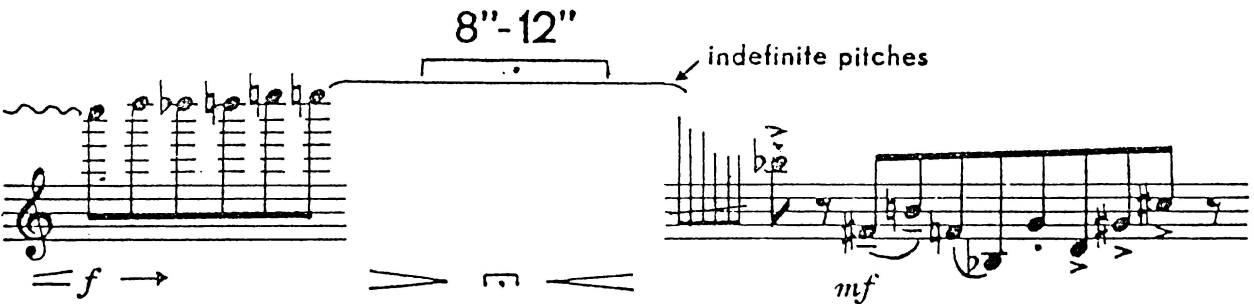
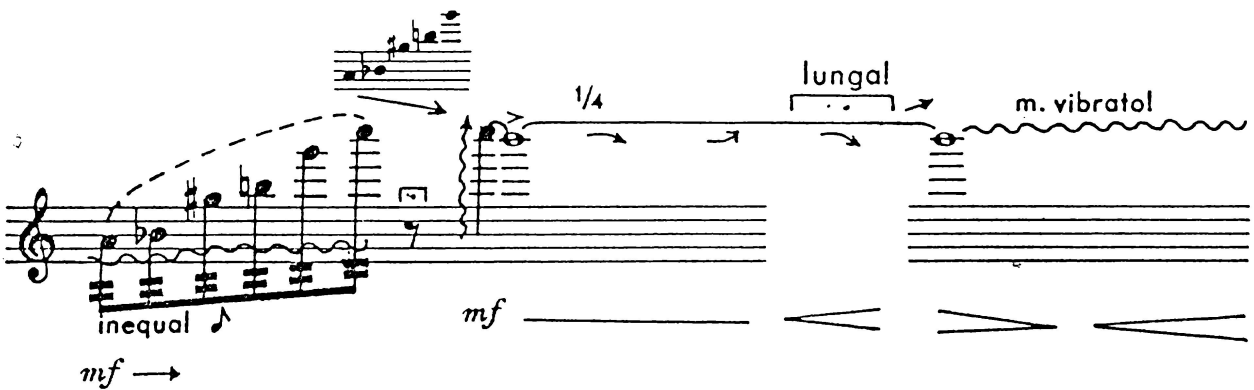
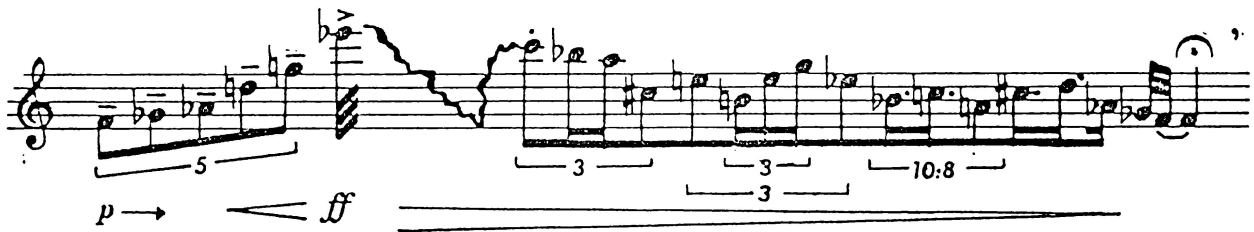
mf → *f*

1/4



WAIT!

very slow:



tempo libero:

Musical notation for the first system of 'tempo libero'. It features a treble clef and a key signature of one sharp (F#). The melody consists of a series of eighth notes with a slight upward inflection. Above the staff, there are two vertical groups of five dots each, and a horizontal line with an arrow pointing to the right. Below the staff, dynamic markings are indicated: *p* (piano) at the beginning, *mf* (mezzo-forte) in the middle, and *f* (forte) towards the end. The notation concludes with a series of sixteenth notes.

Musical notation for the second system of 'tempo libero'. It features a treble clef and a key signature of one sharp (F#). The melody is a series of eighth notes. Above the staff, there are two vertical groups of five dots each. Below the staff, dynamic markings are indicated: *p* (piano) at the beginning and *f* (forte) towards the end. The notation includes a triplet of eighth notes and a glissando (gliss.) marking over a series of notes.

very fast!

Musical notation for the third system of 'very fast!'. It features a treble clef and a key signature of one sharp (F#). The melody is a series of eighth notes with a slight upward inflection. Above the staff, there are three groups of five dots each, and a horizontal line with an arrow pointing to the right. Below the staff, dynamic markings are indicated: *p* (piano) at the beginning and *p* (piano) towards the end. The notation concludes with a series of notes marked *sim.* (simile).

Musical notation for the fourth system of 'very fast!'. It features a treble clef and a key signature of one sharp (F#). The melody is a series of eighth notes. Below the staff, the marking *molto!!!* is present.

Musical notation for the fifth system of 'very fast!'. It features a treble clef and a key signature of one sharp (F#). The melody is a series of eighth notes. Above the staff, there are five vertical groups of five dots each, with the first group labeled *C4* and the second *Bb*. Below the staff, dynamic markings are indicated: *mf* (mezzo-forte) at the beginning and *p* (piano) towards the end. The notation includes a glissando (gliss.) marking over a series of notes.

Musical notation for the sixth system of 'very fast!'. It features a treble clef and a key signature of one sharp (F#). The melody is a series of eighth notes. Above the staff, there are three vertical groups of five dots each, with the first group labeled *C4* and the second *C4*. Below the staff, dynamic markings are indicated: *f* (forte) at the beginning and *f* (forte) towards the end. The notation includes a tempo marking $\text{♩} = 68$ and a series of notes with fingerings (48), (82), (116), (60), and (109). The notation concludes with a triplet of eighth notes.

(♩=48)

fff → *(=♩)*

13

(b) *v*

f > < *f* > *mf* →

CHANGES OF THE SOUND COLOUR:

m.l *mf* →

2"

(b) *mp* →

3"

mf →

3"

mp →

1"

ff →

2"

shriek (jazz effect)

force air through instrument to the highest poss. note:

f →

B

mf

f

p/f →

1"

— mix these high pitches to the main one —

♩ = 80
con sord.
pp →

gliss.

1,5"

senza sord.
♩ = 72
f

5"

(b) (b) (b)

quasi tr

mf

ppp!

shriek!

moltol

2"

gliss.

mf

alternate fingerings for the same pitch

mf

2"

♂ = hold the bell high

„fff”

pp

f

frullato poco a poco tr

(b)

vibrato
 accel. → ritard.

f → *mp* → *p*

more and more breath!

mf → *pp*

2''-3''

8^{va}

8^{va}

1,5'' ca

sf *sf* *sf* *sf*

libero:

vary freely vibrato, senza vibr., flutter tonguing, harmonics and changes of timbre (through finger.)

p/f →

3

cresc. → *f* *mf*

as fast as possible

12-15 times

1 (1) 8 (7) 15 (12)

weak lip pressure

flutter tong.

very dense

p < >

mf very long decrescendol

frull. key dicks (little sound!)

p \rightarrow \leftarrow \rightarrow \leftarrow \rightarrow *ppp* \rightarrow

Detailed description: This block shows two staves of music. The first staff has a treble clef and contains a series of notes with a 'frull.' (trill) symbol above a group of notes. The second staff contains a series of notes with 'key dicks' (small 'x' marks) above them. Dynamics range from *p* to *ppp*. A series of arrows indicates the dynamic contour.

? ? m. vibrato 1,5"

m. \leftarrow \rightarrow *p* \leftarrow \rightarrow

Detailed description: This block shows a single staff of music with a treble clef. It features notes with question marks and 'x' marks above them, and a wavy line indicating vibrato. A bracket labeled '1,5"' spans a portion of the staff. Dynamics include *m.* and *p*. Arrows show the dynamic contour.

very fast

mf \leftarrow \rightarrow *f* \leftarrow \rightarrow

Detailed description: This block shows two staves of music with a treble clef. The first staff contains a rapid sequence of notes. The second staff continues the sequence. Dynamics range from *mf* to *f*. Arrows indicate the dynamic contour.

dirty sound: ($\text{♩} = 60$)

ff \leftarrow \rightarrow *mf/f* diff. rhyth. values: ♩ \rightarrow ♩

Detailed description: This block shows two staves of music with a treble clef. The first staff has a 'dirty sound' section with a wavy line. The second staff has notes with circled 'o's above them. A tempo marking of $\text{♩} = 60$ is present. Dynamics range from *ff* to *mf/f*. A note value comparison is shown below.

nervous 3"

mp \leftarrow \rightarrow

Detailed description: This block shows two staves of music with a treble clef. The first staff has notes with circled 'o's above them. The second staff has a wavy line and a trill symbol 'tr'. A bracket labeled '3"' spans a portion of the staff. Dynamics include *mp*. Arrows show the dynamic contour.

double trill (with 2 fing.) approx. high pitch

f \rightarrow *pp* \leftarrow \rightarrow *p* \leftarrow \rightarrow *pp* \leftarrow \rightarrow *f* \rightarrow

Detailed description: This block shows two staves of music with a treble clef. The first staff has notes with circled 'o's above them. The second staff has a double trill symbol 'tr' and a wavy line. Dynamics range from *f* to *pp* and back to *f*. Arrows indicate the dynamic contour.

3.8^{va}
slow
changes:

mp/f → *sf* *sf*

3.8^{va}

mf *mp* *f* → *pppp* very softl

vibrato (oscillation of pitch!)

p → *f* *al niente!*
(pppppp!)

indeterminated high pitches:

p/f take very, very long time!

very fast

f → 2 short!
1 long!
or: 1 2