

UNIVERSITY OF CALIFORNIA, SAN DIEGO
3 1822 00423 2898

M
42
'529
I5
1983

M
42
.S29
I5
1983

BOGUSLAW SCHAEFFER



INTERVIEW FÜR VIOLINE SOLO

1972



Anadne
83o13

Handwritten scribbles or initials in the bottom right corner.

3
7"
lunga
"fff" →

l'ostesso con A
con G
3
6"

V
2/3
pp
cresc.

♩ = 68 →
8"
decresc. ---
f →

mf →

8"
flebile
V
ppp
ppp

p *molto!* *ppp* *pppp* 10"

mp *mf* 8" D G 5"

con fuoco
as many times as you want

mp → 5"-15"

celere

A D E A

AE 8"

inequale

mf 5"

Vivace

quasi *fff*



sub. lunga

p

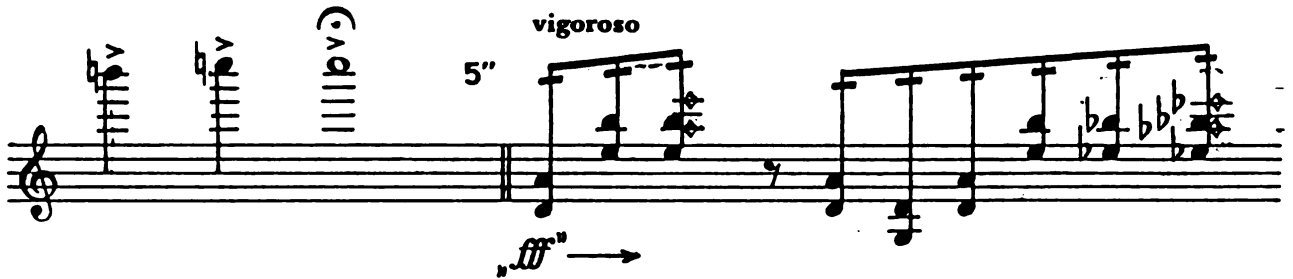
8" $\text{♩} = 104 \rightarrow$



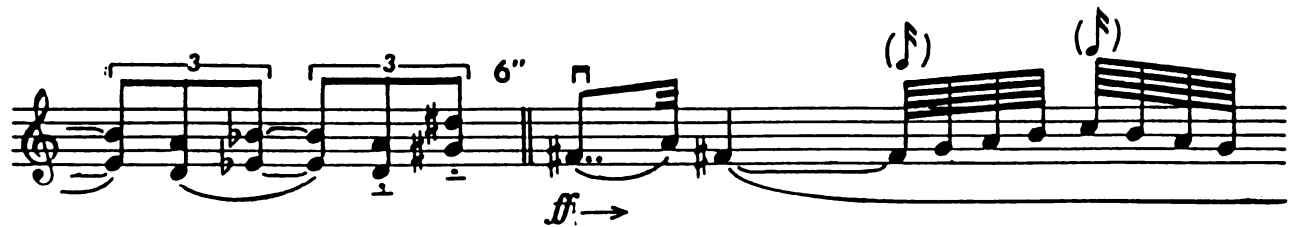
f (more than *mf*) \rightarrow

vigoroso

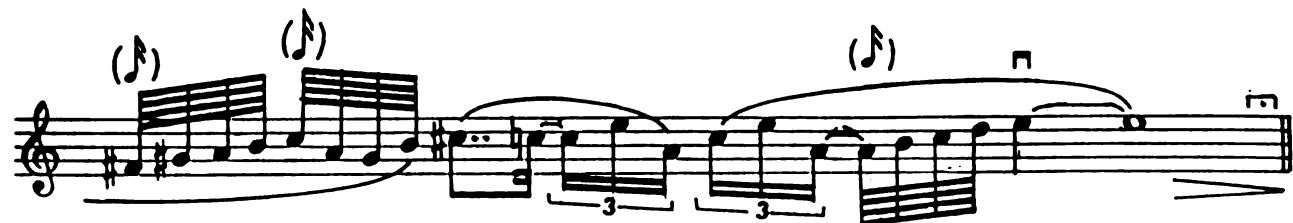
5"



fff \rightarrow



ff \rightarrow



Vivo
mf

Andante soave
pp →

13"-15"
mf sul A

very fast tr
tr (senza tremol.)

5"

f

Molto vivace scintillante
 Souv. à Campagnoli
 sul pont.

6"

ff sempre

risoluto

(Souv. à Locatelli)

con, lancio

in the case of a small hand - on D & A

Quasi cadenza

libero

Vivo

etc.

passionato

patetico

pesante

ff *(f)*

ff **con tutta forza** *p*

f **(sul A)**

morbido

p **sul pont.** **ord. (D)** **ossia** *mp*

ff *p*

mesto

pp *p* *pp*

pacato

V

pp → *mp* *f* →

ff → *mp* *ff*

f *pp*

f *pp*

flebile

p *mp*

innocente

sub. *ppp* *mf*

lusignando
mp, ma molto espress.

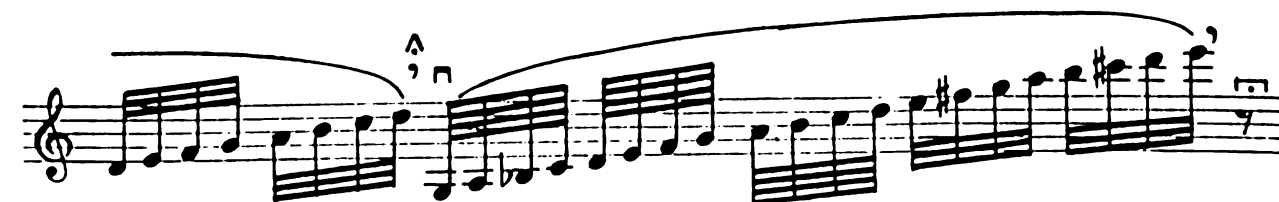
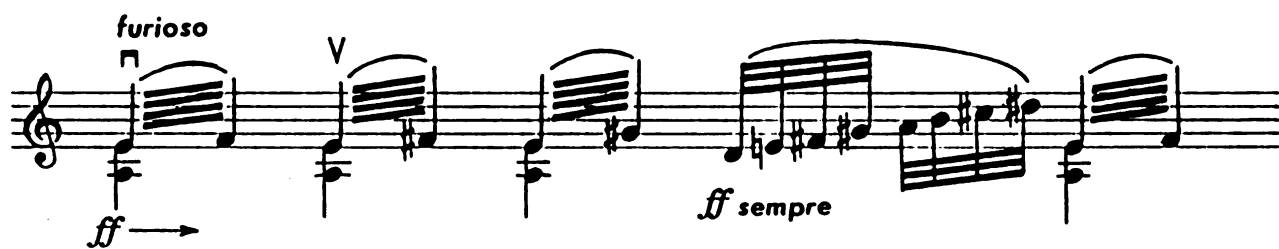
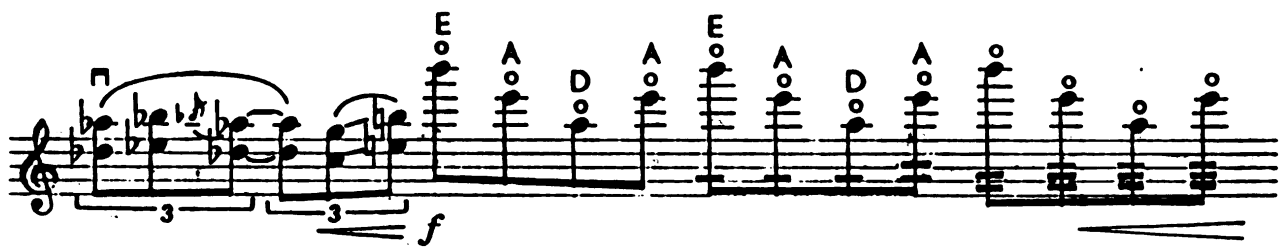
p *mp*

mf *mp* *pp* *teneramente*

sul D
p *cresc.*

cresc. *molto cresc.* *p*

mf



mp

sub. *p*

sul tasto

ord.

ff

con spirito

p

mf

suffocato

pp

(*pp* sempre)

DURATA TOTALE
12'30"-16'